

Multipix Product Specification

MP-HD600

H.264 Full HD Full Frame Rate IP Infrared PTZ Camera

Product Key Features:

- Full HD Full Frame Rate 1080p 30p
- Hybrid full HD 1080p video (IP+H DSDI) *option*
- 2M CMOS Image Sensor Progressive Scan
- 160x Day / Night; WDR; 100m IR
- Weatherproof Outdoor Enclosure



MP-HD600 is the cost effective high definition camera with H.264 IP HDTV. it uses standard H.264 to compress five megapixels progressive scan CMOS video image at the Blu-Ray DVD quality in full motion FULL HD 1080p at 4Mbps in maximum! Beside, MP-HD600 IR has the HDSDI interface, and can output HDSDI directly.

MP-HD600 Applications :

- HD City Surveillance
- HD Environmental Surveillance
- HD Traffic Monitoring



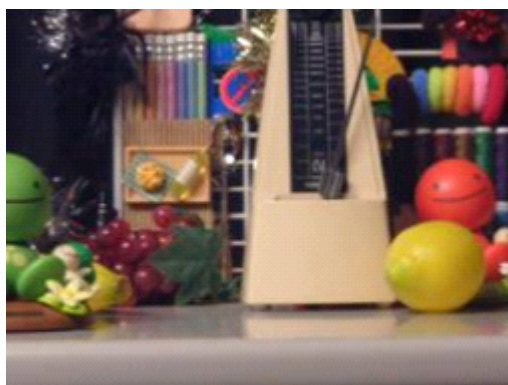
MP-HD600 Technical Specification

Digital Video Processor:

Compression Technology	: Dual Streaming (H.264/MJPEG or H.264/H.264)
Frame Rate	: 1080p 30fps; 720p 60fps
Video Protocol	: TCP/IP, UDP, PPPoE, RMTP, ARP, DDNS, FTP, RTSP
CP	: 240 MHz ARM926
Camera Access	: 25
Video Size	: 1920*1080/1280*720 / 720 *576 / 352 *288
Bit Rate	: 10Kbps ~ 5Mbps
Audio	: Bi-directional, MP3
GPIO	: 1 in / Out
Ethernet	: 10/100/ GigE (option)

Camera System:

CMOS Sensor	: 1/2.5" CMOS Image sensor
SYNC System	: Internal
Minimum Illumination	: 0 lux IR
Resolution	: 2 megapixels
S/N Ratio	: 52db (MIN) / 60 db (TYP) (AGC OFF)
Zoom Range	: 10X Optical lens
Digital Zoom	: 16x
Focus Length	: 4.5mm-45mm
IRIS:	: F1.8 – F2.2



MP-HD600 Technical Specification

Operational:

Pan / Tilt Accuracy	: 0.1%
Pan / Tilt Protocol	: PELCO-D
Preset Groups	: 64
Cruise Tour	: 4 Groups, 16 Preset
Motor	: Stepping Motor
Pan / Tilt Receiver	: Build in
Pan Rotation Range	: 360
Pan Speed	: 10°/s

Environmental:

Fan / Heater	: Auto Start
LED Display	: Power, Link, LAN
LAN Ports	: 10/100 BASE-T, RJ45, 1ea
Operation Temperature	: -50° ~ 70°
Operation Humidity	: within 85% RH
Power Supply	: AC 24V / 2.0A
Weather Resistant	: Weatherproof
Connector	: RJ45 for IP Connection, RS485 for Analog PTZ Control, BNC for HDSDI

